

I P A D

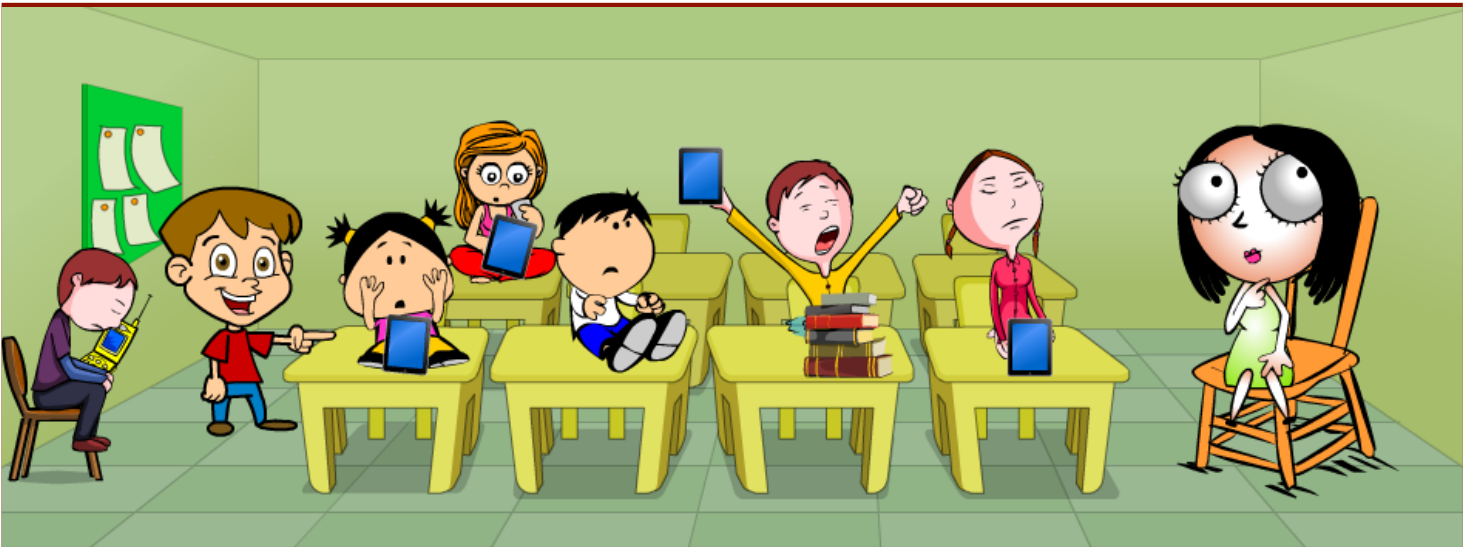
RULES

**DODGE CITY
MIDDLE
SCHOOL**

2014

VOL 1

RULE 1: STICK WITH THE CLASS



WHEN IPADS ARE USED IN CLASS FOR A SPECIFIC PURPOSE, THE STUDENTS MUST BE IN THE CORRECT APP AND FOLLOWING ALONG WITH THE CLASS. STUDENTS THAT ENTER INTO DIFFERENT APPS OR GOOF AROUND WITH THE IPAD KNOW THAT THEY WILL LOSE THE PRIVILEGE OF USING THE IPAD AND WILL THEN BE LEFT TO OBSERVE A PARTNER MAKING USE OF THE IPAD FOR THE REMAINDER OF THE CLASS.

RULE 2: SOUND

STUDENTS ARE TOLD THAT, UNLESS WE ARE SPECIFICALLY USING THE SOUND FOR CLASS, THE SOUND SWITCH ON THE IPADS SHOULD ALWAYS BE SWITCHED TO MUTE. THIS PREVENTS ACCIDENTALLY STARTING AN APP OR GAME WITH SOUND AND HAVING IT BE A DISTRACTION TO THE REST OF THE CLASS. IF EAR BUDS ARE AVAILABLE, STUDENTS MUST PLUG IN THE EAR BUD PRIOR TO TURNING OFF THE MUTE SWITCH.



RULE 3: RESPECT THE FILES OF OTHERS



WHEN USING THE IPADS, STUDENTS MUST RESPECT THE DIGITAL PROPERTY OF OTHERS. STUDENTS ARE NOT TO WRECK, USE, OR READ THE FILES OF OTHERS WITHOUT PERMISSION.

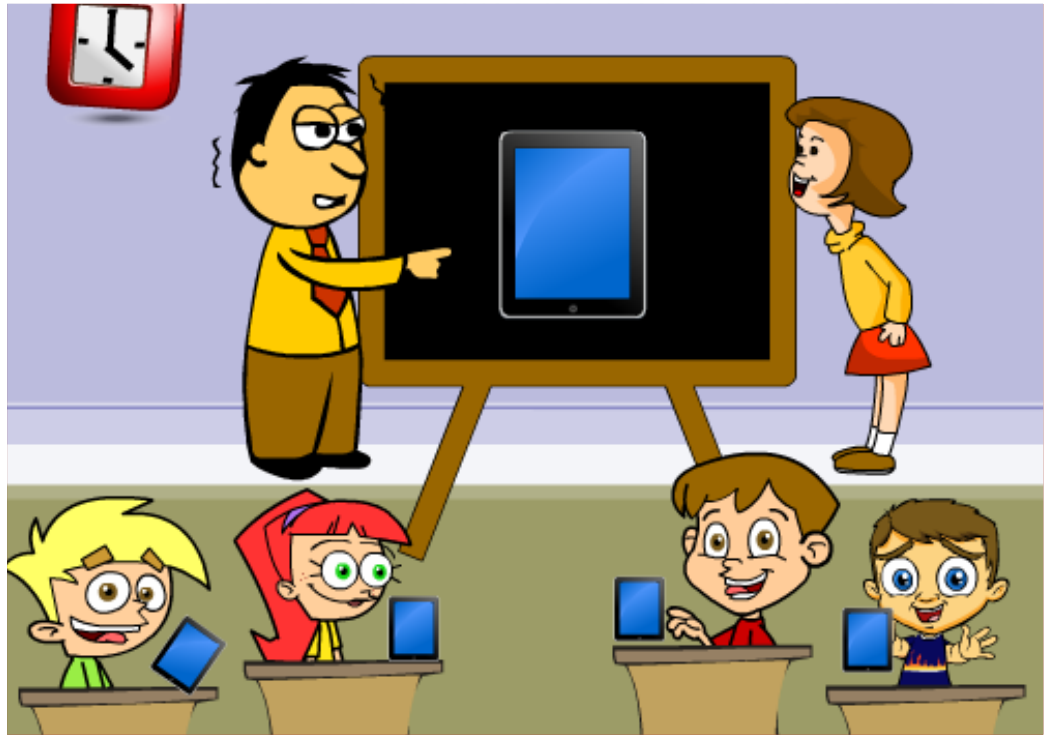
RULE 4: USE OF THE INTERNET

STUDENTS DO HAVE ACCESS TO THE INTERNET AT ALL TIMES. SPECIFIC SITES CAN BE BLOCKED BY ADJUSTING THE SETTINGS ON THE WIRELESS ROUTER, BUT STRICT GROUND RULES WILL BE APPLIED FOR INTERNET USE. UNLESS STUDENTS HAVE SPECIFIC INSTRUCTIONS TO GO ONTO THE INTERNET FOR A CLASS ACTIVITY, THE STUDENT MUST ASK FOR PERMISSION TO DO SEARCHES ON THE INTERNET. WHEN STUDENTS ASK FOR PERMISSION TO CONDUCT A SEARCH THE TEACHER WILL ASK THE STUDENT TO BE VERY SPECIFIC AS TO WHAT SITES THEY WILL BE USING AND WHY. THE SAFARI APP WILL BE PLACED IN AN "ASK FOR PERMISSION" FOLDER TO HELP STUDENTS TO REMEMBER TO ASK BEFORE USING THE INTERNET.



RULE 5: SPECIFIC SITES & APPS NOT ALLOWED AT SCHOOL

STUDENTS WILL BE LIMITED TO THE TYPES OF APPS THAT WILL BE USED AT SCHOOL. ALL APPS ARE PRELOADED AND EXCLUDE THE USE OF SOCIAL NETWORKING APPS OR THEIR PERSONAL EMAIL WHILE AT SCHOOL. STUDENTS WILL USE THE USD 443 GOOGLE APPS WHEN SENDING E-MAIL AND STORING FILES ELECTRONICALLY.



THE YOUTUBE APP, WILL NOT BE USED DURING SCHOOL HOURS (UNLESS A TEACHER IS USING IT FOR CLASS.) IN MOST CASES THE TEACHER WILL DISPLAY THE VIDEO ON THE SMART BOARD FOR THE ENTIRE CLASS TO VIEW UNLESS WE ARE USING IT FOR A CLASS.

RULE 6: USE OF CAMERA AND PHOTO BOOTH APPS



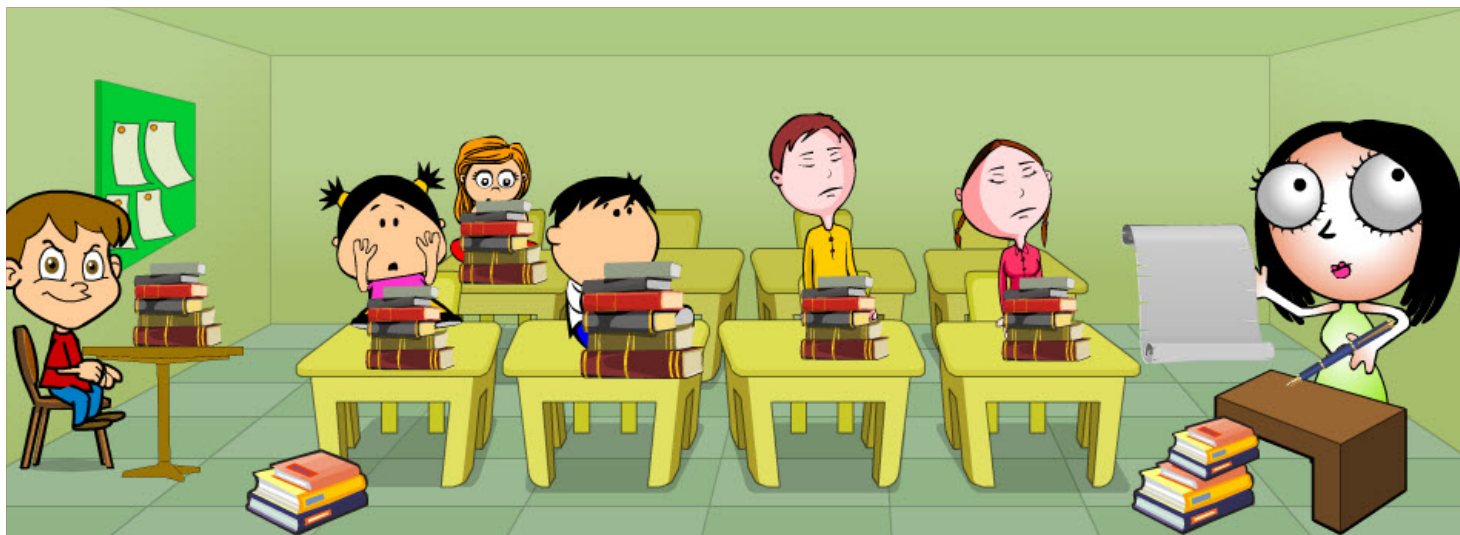
TWO OF THE BIGGEST POTENTIAL DISTRACTIONS OF THE IPAD ARE THE CAMERA APP AND PHOTO BOOTH APP. BOTH OF THESE APPS ALLOW PHOTOS TO BE TAKEN AND MANIPULATED FOR FUN. THESE APPS ARE OFF LIMIT TO STUDENTS UNLESS THEY WILL BE USING THEM FOR CLASS UNDER THE SUPERVISION OF A TEACHER.

RULE 7: IMMEDIATELY STOPPING



IT IS IMPORTANT THAT STUDENTS RECOGNIZE THAT WHEN AN IPAD LEARNING EVENT CLOSES THAT THEY IMMEDIATELY STOP WHEN IT IS TIME TO MOVE ON TO ANOTHER LEARNING EVENT. AT THE CLOSE OF AN IPAD LEARNING EVENT TEACHERS WILL GIVE STUDENTS TEN SECONDS COUNT FOR THE IPADS TO BE SHUT OFF AND PLACED IN THE CORRECT STORAGE LOCATION. FAILURE TO DO SO RESULTS IN LOST PRIVILEGES. TEACHERS WILL COUNT OUT LOUD OR PROVIDE A TEN SECOND TIME CLOCK TO SIGNAL A TRANSITION

RULE 8: WHEN THE IPAD BECOMES A DISTRACTION



AT ANY TIME THE TEACHER SEES THAT THE IPAD IS A DISTRACTER TO THE LEARNING PROCESS STUDENTS WILL BE GIVEN A VERBAL WARNING. IT IS IMPORTANT THAT STUDENTS UNDERSTAND THAT THE IPAD IS A LEARNING TOOL AND THAT IF IT BECOMES A DISTRACTION TO THEIR LEARNING THE TEACHER HAS THE RIGHT TO LIMIT ITS USE AND HAVE THE CLASS OR INDIVIDUAL STUDENTS TO POWER OFF THE DEVICE AND LEARN THROUGH TRADITIONAL METHODS.

